



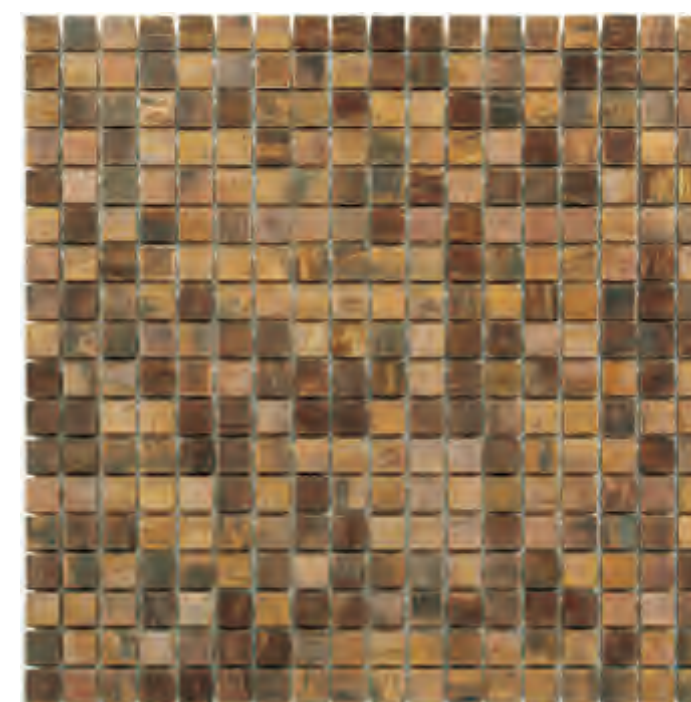
# Bronze

Bronze mosaic is colored by copper oxidation into the color of bronze, which improves the wear resistance and corrosion resistance of copper. Bronze mosaics are loved by the public because of their retro colors, simple patterns and iconic colors have become a new trend in interior decoration. Conventional shapes are hexagon, square, round, etc. Lightweight and easy to take care of. It can also be matched with crystal, stone and other mosaics.



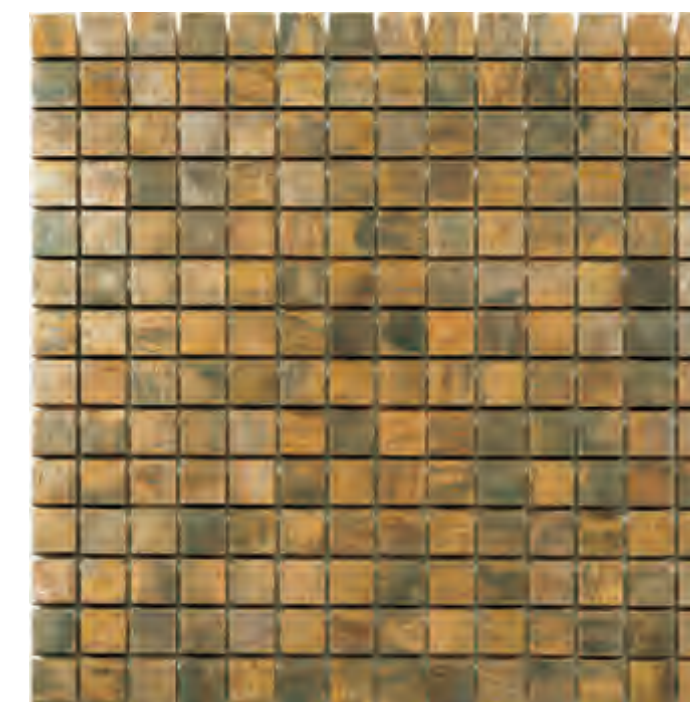


# Bronze Various Size



BZY

chip size :	15x15x8mm	sqm/ctn :	0.99 m <sup>2</sup>
sheet size :	300x300mm	pcs/ctn :	11 pcs
ctn/plt :	72 ctns	weight/ctn :	10.57 kgs



BZA

chip size :	20x20x8mm	sqm/ctn :	1.02 m <sup>2</sup>
sheet size :	305x305mm	pcs/ctn :	11 pcs
ctn/plt :	72 ctns	weight/ctn :	11.57 kgs



BZb

chip size :	23x23x8mm	sqm/ctn :	0.99 m <sup>2</sup>
sheet size :	300x300mm	pcs/ctn :	11 pcs
ctn/plt :	72 ctns	weight/ctn :	11.65 kgs



BZd

chip size :	48x48x8mm	sqm/ctn :	0.99 m <sup>2</sup>
sheet size :	300x300mm	pcs/ctn :	11 pcs
ctn/plt :	72 ctns	weight/ctn :	13.08 kgs

Mounted: mesh mounted





BZ75150



# Bronze Various Size

Bronze



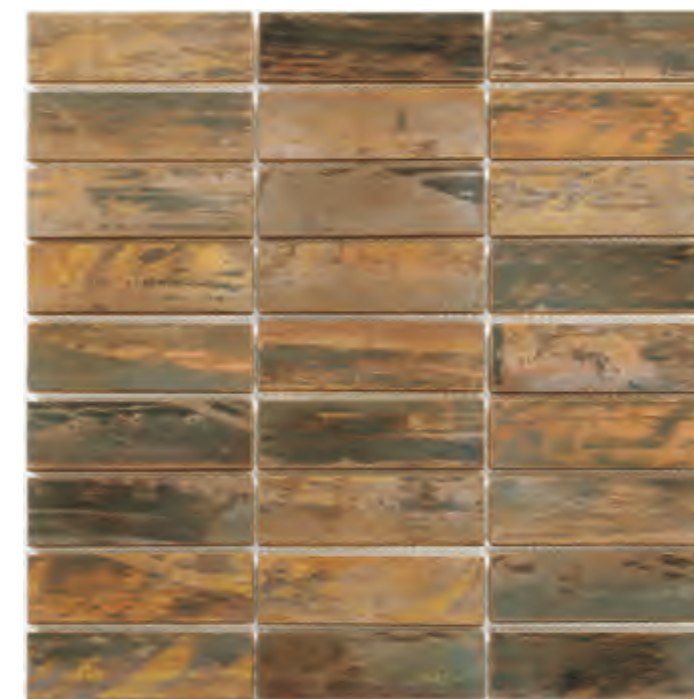
BZh

chip size :	23x48x8mm	sqm/ctn :	0.98 m <sup>2</sup>
sheet size :	298x298mm	pcs/ctn :	11 pcs
ctn/plt :	72 ctns	weight/ctn :	12.81 kgs



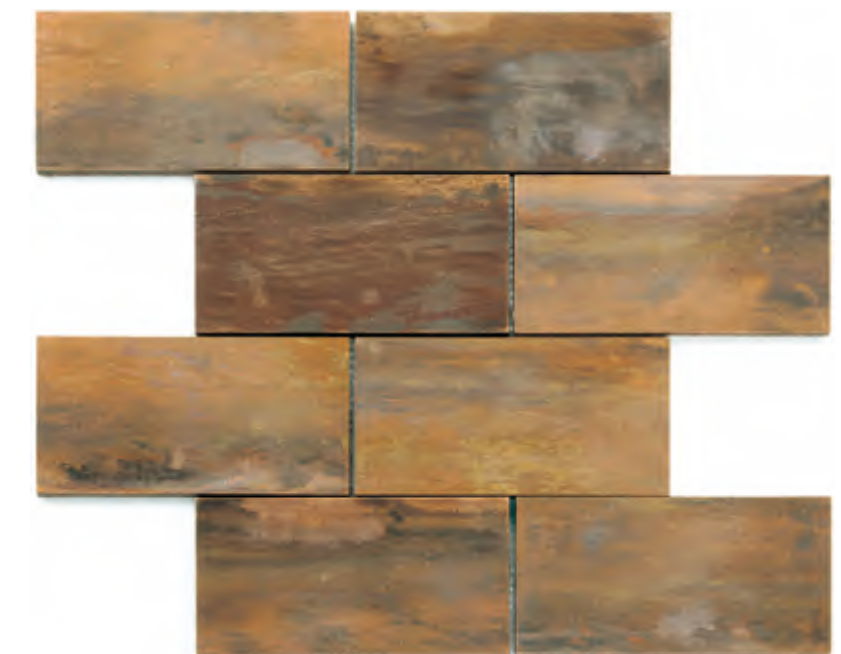
BZBD

chip size :	23x23+48x48x8mm	sqm/ctn :	0.99 m <sup>2</sup>
sheet size :	300x300mm	pcs/ctn :	11 pcs
ctn/plt :	72 ctns	weight/ctn :	12.88 kgs



BZh0

chip size :	30x98x8mm	sqm/ctn :	0.93 m <sup>2</sup>
sheet size :	285x298mm	pcs/ctn :	11 pcs
ctn/plt :	72 ctns	weight/ctn :	12.83 kgs



BZ75150

chip size :	75x150x8mm	sqm/ctn :	1.02 m <sup>2</sup>
sheet size :	302x306mm	pcs/ctn :	11 pcs
ctn/plt :	72 ctns	weight/ctn :	15 kgs

Mounted: mesh mounted







BZBB

chip size :	25x25x6/8mm	sqm/ctn :	1.01 m <sup>2</sup>
sheet size :	303x303mm	pcs/ctn :	11 pcs
ctn/plt :	72 ctns	weight/ctn :	11.84 kgs



BZBh

chip size :	23x48x6/8mm	sqm/ctn :	0.89 m <sup>2</sup>
sheet size :	280x290mm	pcs/ctn :	11 pcs
ctn/plt :	72 ctns	weight/ctn :	11.55 kgs



BZBBD

chip size :	23x23+48x48x6/8/10mm	sqm/ctn :	0.76 m <sup>2</sup>
sheet size :	291x291mm	pcs/ctn :	9 pcs
ctn/plt :	72 ctns	weight/ctn :	11.72 kgs



BZB48

chip size :	48x48x6/8mm	sqm/ctn :	0.93 m <sup>2</sup>
sheet size :	291x291mm	pcs/ctn :	11 pcs
ctn/plt :	72 ctns	weight/ctn :	12.75 kgs

Mounted: mesh mounted



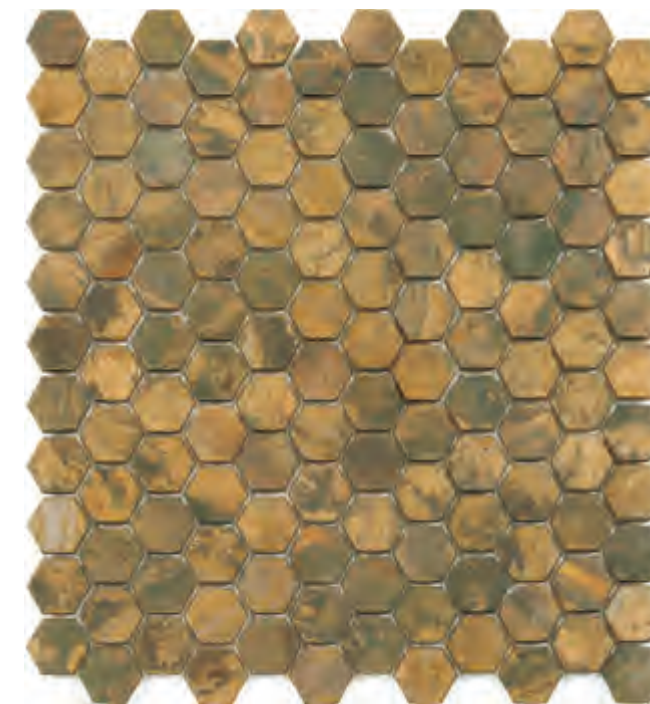


BZ626



# Bronze Various Size

Bronze



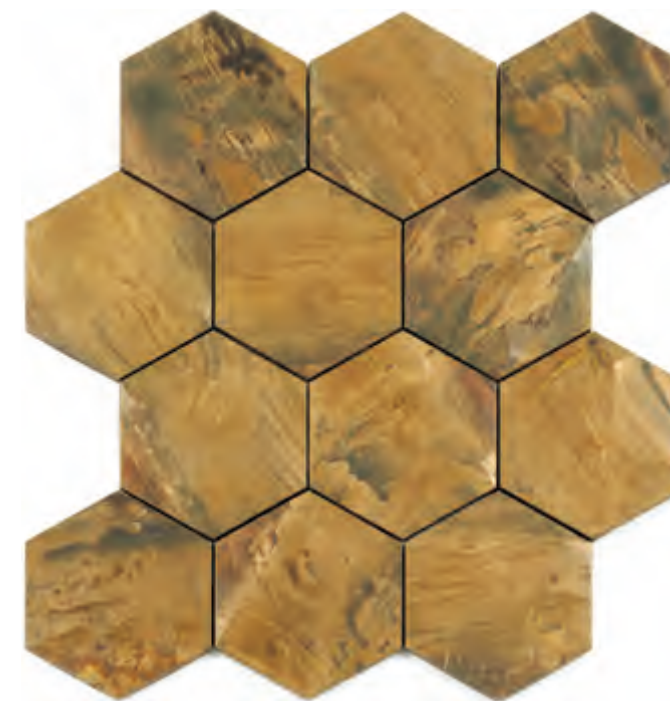
BZ626

chip size : Hex 26x30x8mm	sqm/ctn : 0.98 m <sup>2</sup>
sheet size : 290x306mm	pcs/ctn : 11 pcs
ctn/plt : 72 ctns	weight/ctn : 11.37 kgs



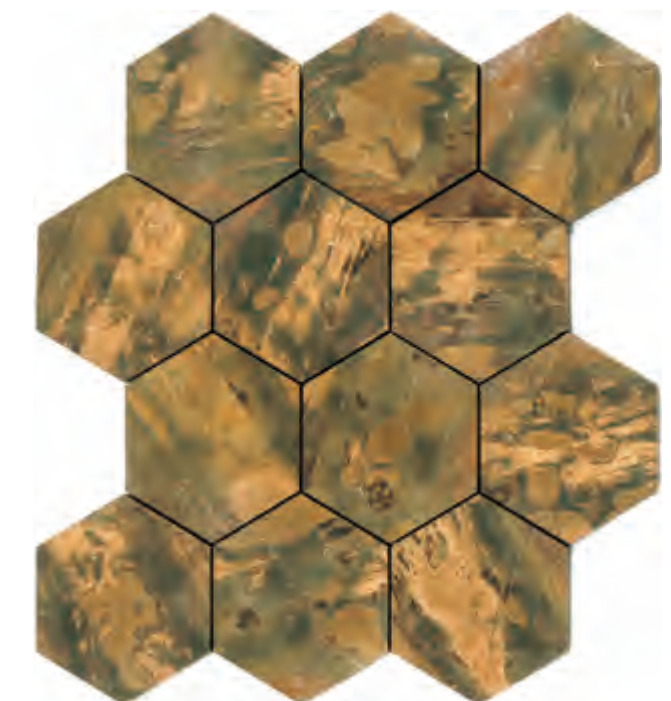
BZ6483

chip size : 25x22+48x55x8mm	sqm/ctn : 0.93 m <sup>2</sup>
sheet size : 285x296mm	pcs/ctn : 11 pcs
ctn/plt : 72 ctns	weight/ctn : 12.15 kgs



BZ687

chip size : Hex 87x100x8mm	sqm/ctn : 0.89 m <sup>2</sup>
sheet size : 265x305mm	pcs/ctn : 11 pcs
ctn/plt : 72 ctns	weight/ctn : 13.06 kgs



BZ687F

chip size : Hex 87x100x8mm	sqm/ctn : 0.89 m <sup>2</sup>
sheet size : 265x305mm	pcs/ctn : 11 pcs
ctn/plt : 72 ctns	weight/ctn : 12.84 kgs

Mounted: mesh mounted





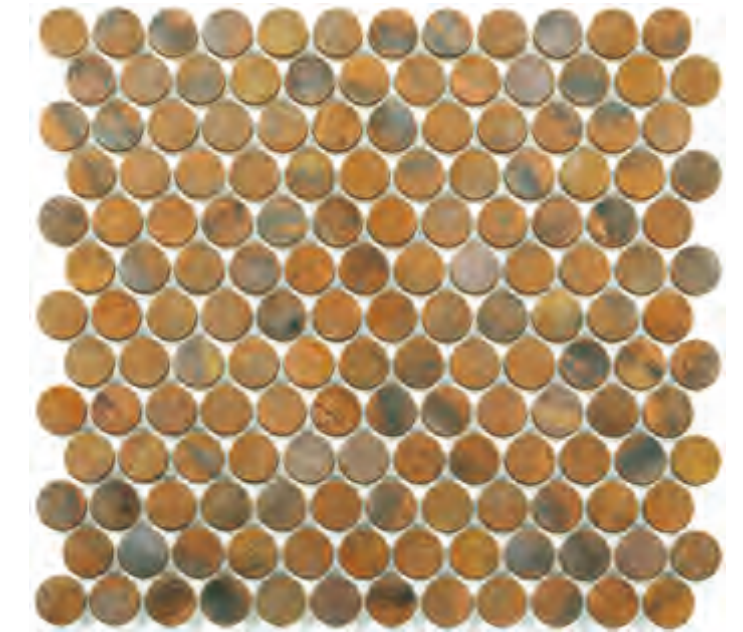


# Bronze Various Size



BZD20

chip size :	Circle 20x8mm	sqm/ctn :	1.02 m <sup>2</sup>
sheet size :	294x316mm	pcs/ctn :	11 pcs
ctn/plt :	72 ctns	weight/ctn :	11.65 kgs



BZD23

chip size :	Circle 23x8mm	sqm/ctn :	0.92 m <sup>2</sup>
sheet size :	282x298mm	pcs/ctn :	11 pcs
ctn/plt :	72 ctns	weight/ctn :	11.74 kgs



BZI20

chip size :	Chevron 28x96x8mm	sqm/ctn :	0.71 m <sup>2</sup>
sheet size :	225x288mm	pcs/ctn :	11 pcs
ctn/plt :	72 ctns	weight/ctn :	9.93 kgs



BZI21

chip size :	Chevron 28x96x8mm	sqm/ctn :	0.85 m <sup>2</sup>
sheet size :	258x298mm	pcs/ctn :	11 pcs
ctn/plt :	72 ctns	weight/ctn :	11.88 kgs

Mounted: mesh mounted





BZS



# Bronze Various Size

Bronze



BZS



chip size :	Scallop 33x39x8mm	pcs/ctn :	11 pcs	weight/ctn :	11.06 kgs
sheet size :	283x292mm	sqm/ctn :	0.91 m <sup>2</sup>	ctn/plt :	72 ctns
Mounted :	mesh mounted				



MBZCB652



## Bronze & Crystal Mix

Bronze



M8BC20N53

chip size	: Diamond 23x40+Hex 42x48mm
sheet size	: 262x302mm
ctn/plt	: 72 ctns
sqm/ctn	: 0.87 m <sup>2</sup>
pcs/ctn	: 11 pcs
weight/ctn	: 10.57 kgs



MBZCB652

chip size	: Hex 42x48x6/8mm
sheet size	: 295x292mm
ctn/plt	: 72 ctns
sqm/ctn	: 0.95 m <sup>2</sup>
pcs/ctn	: 11 pcs
weight/ctn	: 16.27 kgs

Mounted: mesh mounted





# Bronze & Stone Mix

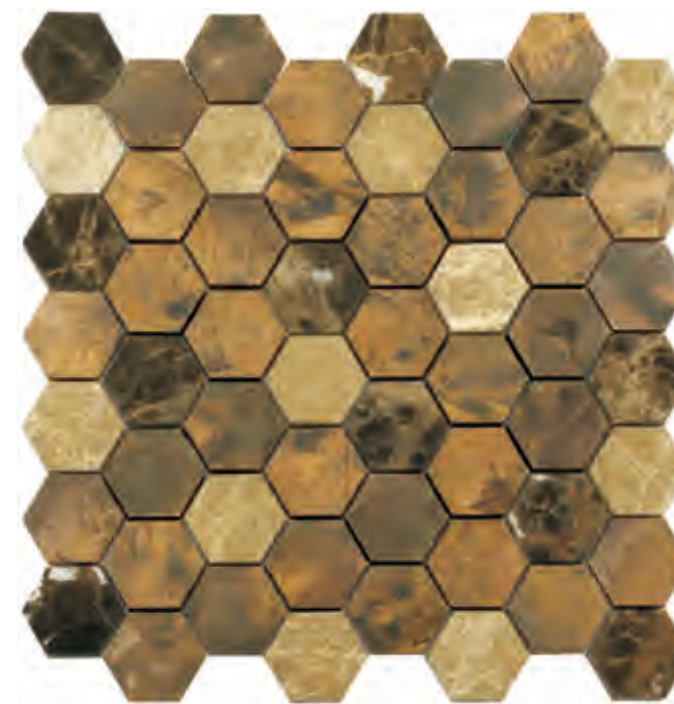


M8BT654



M8BT20N54

chip size	: Diamond 23x40+Hex 42x48mm
sheet size	: 262x302mm
ctn/plt	: 72 ctns
sqm/ctn	: 0.87 m <sup>2</sup>
pcs/ctn	: 11 pcs
weight/ctn	: 13.74 kgs



M8BT654

chip size	: Hex 42x48x8mm
sheet size	: 303x306mm
ctn/plt	: 72 ctns
sqm/ctn	: 1.02 m <sup>2</sup>
pcs/ctn	: 11 pcs
weight/ctn	: 16.62 kgs

Mounted: mesh mounted





M8BTRE536



# Bronze & Stone Mix

Bronze



M8BTBDH536

chip size : 8/23/40x73x8mm	sqm/ctn : 0.99 m <sup>2</sup>
sheet size : 300x300mm	pcs/ctn : 11 pcs
ctn/plt : 72 ctns	weight/ctn : 16.38 kgs



M8BTRE536

chip size : 23x23+23x48+48x48x8mm	sqm/ctn : 0.99 m <sup>2</sup>
sheet size : 300x300mm	pcs/ctn : 11 pcs
ctn/plt : 72 ctns	weight/ctn : 16.16 kgs



M8BTSRE536

chip size : 10/15/30/48x48x8mm	sqm/ctn : 0.99 m <sup>2</sup>
sheet size : 300x300mm	pcs/ctn : 11 pcs
ctn/plt : 72 ctns	weight/ctn : 15.83 kgs



M8BTL&N536

chip size : 8/15x98/198+23x98x8mm	sqm/ctn : 0.99 m <sup>2</sup>
sheet size : 300x310mm	pcs/ctn : 11 pcs
ctn/plt : 72 ctns	weight/ctn : 16.49 kgs

Mounted: mesh mounted

